

## Specification Approval Sheet

Model: CR123A1600mAh

Prepared By/Date	Checked By/Date	Approved By/Date
罗小秧		张伟

Customer Approval	Confirmation	Date
		2018年 10月 30日

### 1. Scope

This specification is suitable for the performance of the CR123A Lithium and Manganese Dioxide battery.

### 2. Model

CR123A1600mAh

### 3. Reference Document

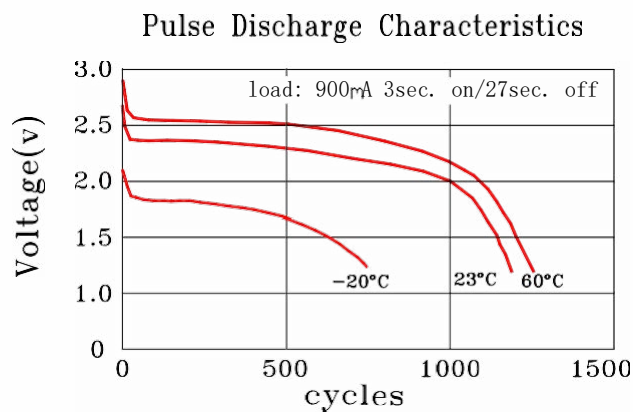
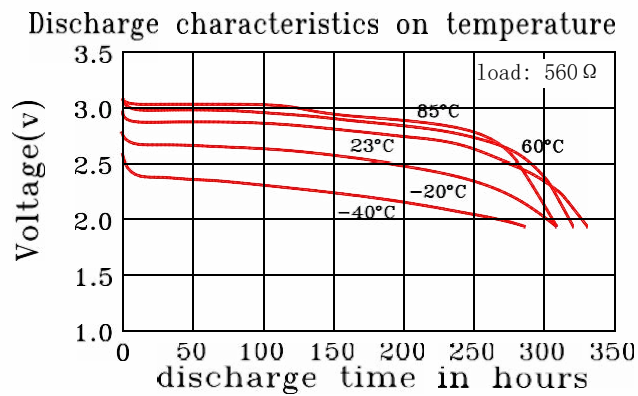
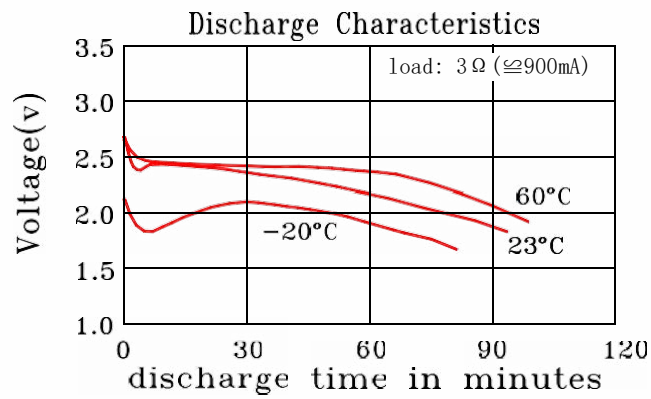
IEC60086-2: 2001 Primary batteries-Part 2: Physical and technological specifications, MOD

GB 8897.2:2005 Primary batteries-Part 2: Physical and technological specifications

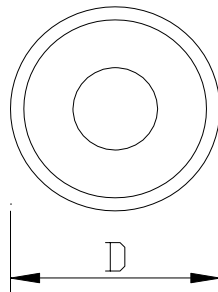
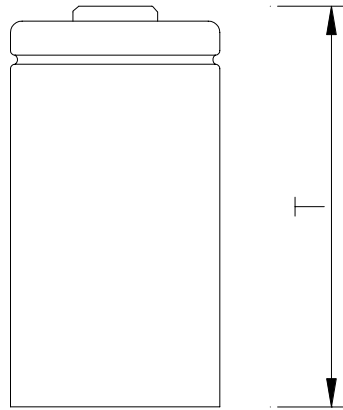
### 4. Specification

No.	Items		Specification
1	Nominal Voltage		3.0 V
2	Capacity (Discharge Current 1mA to 2.0V)	Nominal	1600 mAh
		Minimum	1500 mAh
3	Max. Discharge Current	Continuous	1500 mA
		Pulse	3000 mA
4	Discharge Cut -off Voltage		2.0 V
5	Weight		Approx. 16 .5g
6	Operating Temperature		-40 °C to 60 °C
7	Storage Temperature		-10 °C to 40 °C
8	Relative humidity		65±20%
9	Period of Validity		5 years
10			

## 5. Test Conditions and Performance



6. Drawing (unit: mm)



Items	Description	Dimension
D	Diameter	16.7±0.3mm
T	Height	34.2±0.3mm

## 7. Cautions in use

To ensure proper use of the battery please read the manual carefully before using it.

### .Handling

Do not expose to, dispose of the battery in fire.

Do not put the battery in a charger or equipment with wrong terminals connected.

Avoid shorting the battery

Avoid excessive physical shock or vibration.

Do not disassemble or deform the battery.

Do not immerse in water.

Do not use the battery mixed with other different make, type, or model batteries.

Keep out of the reach of children.

### .Storage

Store the battery in a cool, dry and well-ventilated area.

### .Disposal

Regulations vary for different countries.

Dispose of in accordance with local regulations.

## 8. Note

Any other items which are not covered in this specification shall be agreed by both parties.